

## gauges for homogenizers DS 4" (100mm)



Autorization NO. 1599



PED 2014/68/UE



ATEX 2014/34/UE



EC 1935/2004

These instruments are designed for homogenizer machines and are built according to standard No. 74-06 of the 3-A organization (Sanitary Standards Symbol Administrative Council). The absence of interstices and the mirror finish of the components ensure the highest level of hygiene. The process connection features a special diaphragm seal, which is an integral part of the pressure gauge. To minimize the effects of severe operating conditions, such as vibrations and pulsations, the instruments can be liquid-filled. These types of sensors are intended for Manual (COP) Cleaning.

### 1.OM.2 - Fillable model

**Design:** 74-07 SSI; EN837-1.

**Safety designation:** S1 as per EN 837-2.

**Ranges:** from 0...2000 psi to 0...15000 psi; (from 0...160 bar to 0...1600 bar or equivalent units).

**Accuracy:** class 1,6 as per EN 837-1.

**Ambient temperature:** -13...+149 °F (-25...+65 °C).

**Process temperature:** 14...+248 °F (-10...+120 °C).

Max 302°F (150 °C) for 1 hour during sterilization (S.I.P)<sup>1</sup>.

**Working pressure** (referred to the full scale value): max 75%.

**Over pressure limit:** not available.

**Seal fill:** oil for food service (FDA).

**Protection degree:** IP 65/67 as per EN 60529/IEC 529.

**Process connection:** AISI 316L st.st. with Ra ≤0,8 µm finish (Ra ≤0,5 µm on request).

**Diaphragm:** AISI 316L

**Welding:** AISI 316L TIG.

**Flange and screw nut:** AISI 316 st.st.

**Case:** stainless steel.

**Ring:** stainless steel, bayonet lock.

**Elastic element:** AISI 316L st.st. spiral form.

**Window:** tempered glass.

**Movement:** stainless steel.

**Dial:** aluminium, white with black markings.

**Pointer:** aluminium black anodized.

### 1.OM.3 - Filled model

**Case filling liquid:** glycerine 99,5% (USP, E.P. and F.U.) for food service.

**Ambient temperature:** +59...+149 °F (+15...+65 °C).

**Other features:** as fillable model.

1) S.I.P. = Steamed In Place

RANGES	bar	bar ext. psi int.
0...160	◆	◆
0...250	◆	◆
0...400	◆	◆
0...600	◆	◆
0...1000	◆	◆
0...1600 (1)	◆	◆

RANGES	psi
0...2000	◆
0...3000	◆
0...4000	◆
0...5000	◆
0...6000	◆
0...10000	◆
0...15000	◆

(1) available for some connections type only

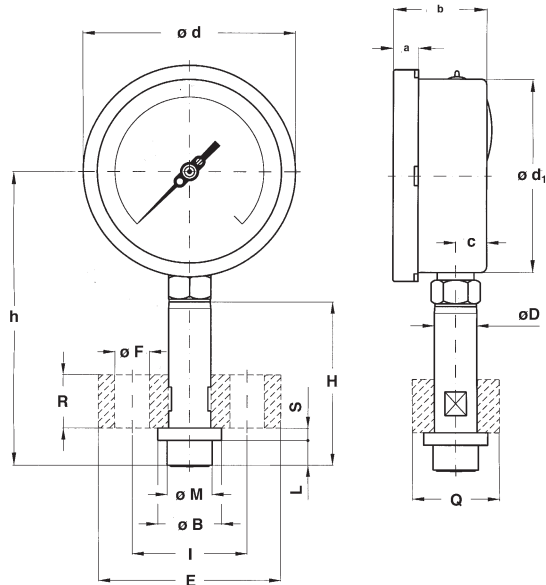
# gauges for homogenizers

DS 4" (100mm)

OM

RC7 - 04/21

IN ORDER TO IMPROVE THEIR PRODUCTION, MESSIS. NUOVA FIMA RESERVE THE RIGHT TO THEMSELVES TO MAKE ALL THE MODIFICATIONS THAT THEY DEEM INDISPENSABLE AT ANY TIME. UPDATED DATA-SHEETS ARE AVAILABLE ON SITE: [www.nuovafima.com](http://www.nuovafima.com)

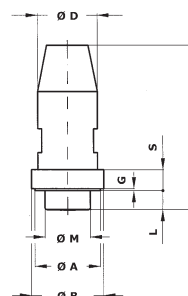


A - LOWER CONNECTION

335 - SA 335  
(with flange)

a	b	c	d	d <sub>1</sub>	h
0.51" (13)	1.90" (48,5)	0.62" (16)	4.35" (110,6)	3.97" (101)	6.08" (154,5)

167 - SA 167



Customer drawing process  
connection available on request

Drawing	Ø D	Ø M	Ø A	Ø B	H	S	G	L	E	Ø F	I	R	Q	Weight
SA 335	0.86" (22)	0.95" (23,5)		1.30" (33,3)	3.38" (86)	0.25" (6,5)		0.51" (13)	3.74" (95)	0.70" (18)	2.36" (60)	1.10" (28)	1.77" (45)	4.01 lbs (1,82 kg)
SA 167	1.22" (31)	0.95" (23,5)	1.33" (34)	1.47" (37,5)	3.38" (86)	0.43" (11)	0.04" (1)	0.39" (10)						2.84 lbs (1,29 kg)

dimensions : inches (mm)

## OPTIONS

Model	Fillable	Filled
<b>S35</b> - Connection as per SA 335, without flange	◆	◆
<b>2D0</b> - ATEX II 2GD h version T.a. 0...+60 °C	<i>See the ATEX pressure gauges data-sheet for technical details</i>	
<b>T32</b> - Safety glass window	◆	◆
<b>TPC</b> - Polycarbonate window	◆	◆

(1) Accuracy refers to the area free from the maximum pointer action.

## "HOW TO ORDER" SEQUENCE

Section / Model / Case / Mounting / Diameter / Range / Process connection / Options

1 OM 2 A E 167 S35  
3 335 2D0...TPC